



## StockPlus™ Doors and Frames Feature List

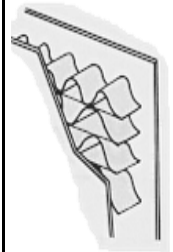
Most manufacturers' hinge and lock locations.  
Galvannealed on all surfaces inside and outside.  
Same Door Components quality as custom.

### Stock Honeycomb and Polystyrene Doors (visible seamed edge)

18 Gauge, A60 galvannealed baked-on primer. Made with high density honeycomb core, both edges beveled. Prep. for 3 ea. 4 1/2" X .134 mortise hinges (field modification allows for .180 heavyweight hinges). Integral closer reinforcement. Honeycomb and polystyrene doors can be rated up to 3 hours.

161 x 2 3/4" b.s.      86 Edge Rim Panic Reinf.'g      ASA x FB Prep

2-6 x 6-8 x 1 3/4"	<p>Call your Door Components sales rep for current pricing, or email <a href="mailto:sales@doorcomponents.com">sales@doorcomponents.com</a>.</p>
2-8 x 6-8 x 1 3/4"	
3-0 x 6-8 x 1 3/4"	
3-6 x 6-8 x 1 3/4"	
4-0 x 6-8 x 1 3/4"	
2-6 x 7-0 x 1 3/4"	
2-8 x 7-0 x 1 3/4"	
3-0 x 7-0 x 1 3/4"	
3-6 x 7-0 x 1 3/4"	
4-0 x 7-0 x 1 3/4"	
2-6 x 8-0 x 1 3/4"	
2-8 x 8-0 x 1 3/4"	
3-0 x 8-0 x 1 3/4"	
3-6 x 8-0 x 1 3/4"	
4-0 x 8-0 x 1 3/4"	



<b>Fire Label</b> <b>Dead Lock</b> <b>Mortise / Sectional Trim</b> <b>Panic Face prep (Mortise &amp; Rim)</b> <b>Flat Bar Astragal (Loose)</b> <b>Flat Bar Astragal (Welded)</b>	<b>Vision Lite Cutout Only</b> <b>Vision Lite Cutout and Channeled Only</b> <b>Louver Cutout Only</b> <b>Louver Cutout and Channeled Only</b> <b>Flush Top Cap Installed</b> <b>Polystyrene door (additional charge)</b>
---	---

**Terms:** All prices are FOB Fontana. No minimum order required. Order by 9 a.m., pick up at 4 p.m. at plant (business days). Next business day delivery in five California counties (Riverside, Orange, Los Angeles, San Diego, San Bernardino); five-county delivery charge is competitive. Delivery available to other locations, with pricing quoted per order. Prices and dimensions are subject to change without notice; please confirm at time of purchase. Add taxes if applicable. See your Door Components sales rep. for prices.

## DOOR COMPONENTS

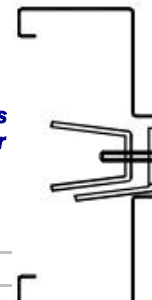
## StockPlus™ Frames Feature List

### Stock KD Drywall Frames with Anchors - 2" Face / Equal Rabbet / 1/2" Drywall Returns

16 Gauge, A60 galvanized baked-on primer. All drywall frames can be rated up to 90 minute. 'S' label. Prep. for 3 each 4 1/2" X .134 mortise hinges (field modification allows for .180 heavyweight hinges). ASA Strike prep. (4 7/8") or rim panic reinforcement.

	5-7/8"	6-1/4"	8-1/4"
2-6 x 6-8 / 2-6 x 7-0	Call your Door Components sales rep for current pricing, or email <a href="mailto:sales@doorcomponents.com">sales@doorcomponents.com</a> .		
2-8 x 6-8 / 2-8 x 7-0			
3-0 x 6-8 / 3-0 x 7-0			
3-6 x 6-8 / 3-6 x 7-0			
4-0 x 6-8 / 4-0 x 7-0			
6-0 x 6-8 / 6-0 x 7-0 PAIR FRM.			
5-0 x 6-8 / 5-0 x 7-0 PAIR FRM.			
4-0 x 6-8 / 4-0 x 7-0 PAIR FRM.			
3-0 x 8-0			
3-6 x 8-0			
4-0 x 8-0 PAIR FRM.			
5-0 x 8-0 PAIR FRM.			
6-0 x 8-0 PAIR FRM.			

Includes  
Silencer

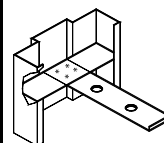


Fire Label Dead Lock Strike	Face Weld
--------------------------------	-----------

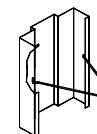
### Stock Masonry Frames with Anchors - 2" Face / Equal Rabbet

16 Gauge, A60 galvanized baked-on primer. Frames can be rated up to 3 hours. 'S' label. Prep. for 3 ea. 4 1/2" X .134 mortise hinges (field modification allows for .180 heavyweight hinges). ASA Strike prep. (4 7/8") or rim panic reinforcement.

	5-3/4" 7/16" returns	6-1/4" 1/2" returns	7-3/4" 1/2" returns	8-1/4" 1/2" returns
2-6 x 6-8 / 2-6 x 7-0	Call your Door Components sales rep for current pricing, or email <a href="mailto:sales@doorcomponents.com">sales@doorcomponents.com</a> .			
2-8 x 6-8 / 2-8 x 7-0				
2-10 x 6-8 / 2-10 x 7-0				
3-0 x 6-8 / 3-0 x 7-0				
3-6 x 6-8 / 3-6 x 7-0				
4-0 x 6-8 / 4-0 x 7-0				
4-0 x 6-8 / 4-0 x 7-0 PAIR FRM.				
5-0 x 6-8 / 5-0 x 7-0 PAIR FRM.				
6-0 x 6-8 / 6-0 x 7-0 PAIR FRM.				
7-0 x 6-8 / 7-0 x 7-0 PAIR FRM.				
3-0 x 8-0				
3-6 x 8-0				
8-0 x 6-8 / 8-0 x 7-0 PAIR FRM.				
4-0 x 8-0 PAIR FRM.				
5-0 x 8-0 PAIR FRM.				
6-0 x 8-0 PAIR FRM.				
7-0 x 8-0 PAIR FRM.				
8-0 x 8-0 PAIR FRM.				



Includes  
Silencer Holes



Punch & Dimple (no bolts)	\$ 25.00	Dead Lock Strike	\$ 12.00	Face Weld	\$ 6.00
XB5 Bolts (each)	\$ 1.25	Fire Label	\$ 6.00	Welded Anchors	

**Terms:** All prices are FOB Fontana. No minimum order required. Order by 9 a.m., pick up at 4 p.m. at plant (business days). Next business day delivery in five California counties (Riverside, Orange, Los Angeles, San Diego, San Bernardino); five-county delivery charge is competitive. Delivery available to other locations, with pricing quoted per order. Prices and dimensions are subject to change without notice; please confirm at time of purchase. Add taxes if applicable. See your sales rep. for prices.